

TEXTURED STEEL SIDING



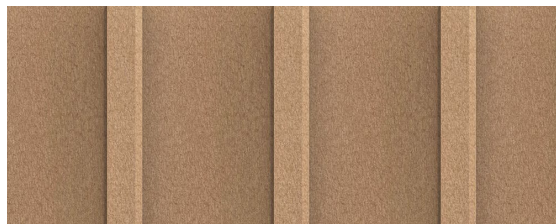
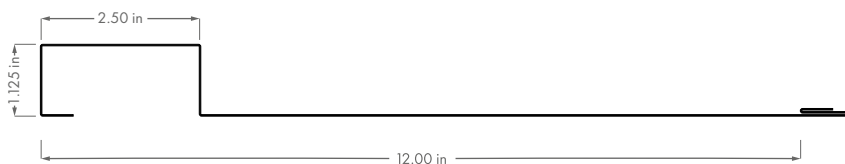
Armourside.com



Board + Batten

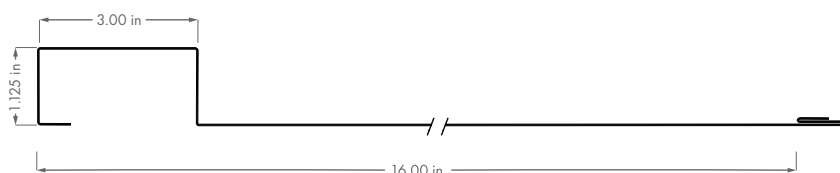
12" Board

10' Length - 191100 | 13' Length - 191200



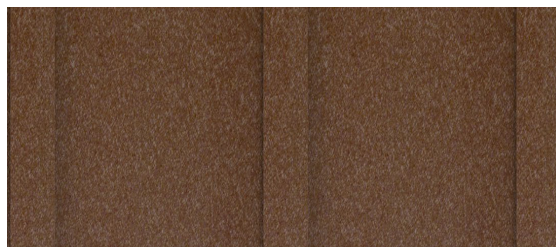
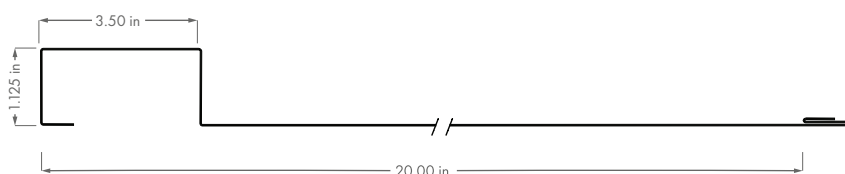
16" Board

10' Length - 191150 | 13' Length - 191250



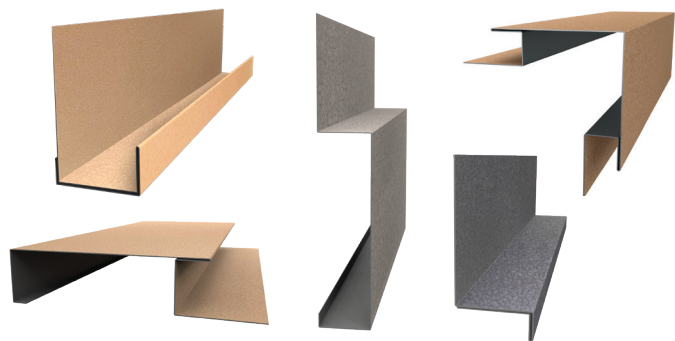
20" Board

10' Length - 191175 | 13' Length - 191275



Board and Batten is a cost-effective alternative to traditional board and batten construction that provides a striking cladding solution with a vast selection of trims and finishing pieces to accommodate versatile installation opportunities for nearly any project.

Board + Batten Trims



SCAN CODE TO VIEW THE
BOARD + BATTEN TRIMS &
ACCESSORIES!

OR VISIT US AT
Armourside.com



Armour Wall



Profile 1

10' Length - 190027
13' Length - 190028



Profile 2

10' Length - 190029
13' Length - 190031



Profile 3

10' Length - 190043
13' Length - 190044



Profile 4

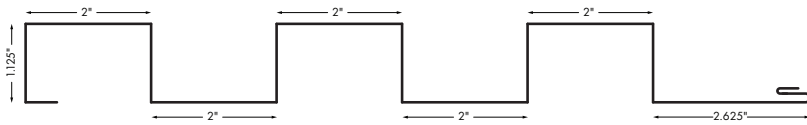
10' Length - 190051
13' Length - 190052



Profile 5

10' Length - 190055
13' Length - 190056

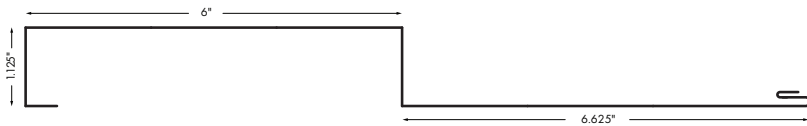
Profile 1



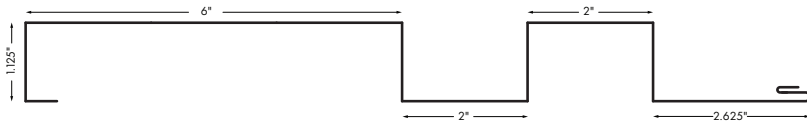
Profile 2



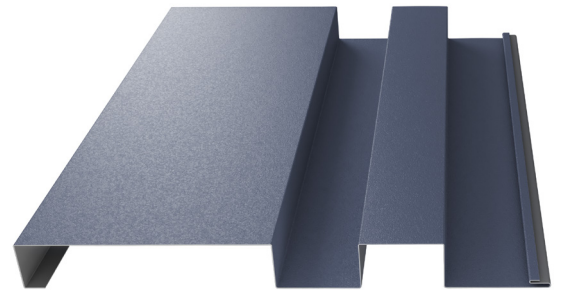
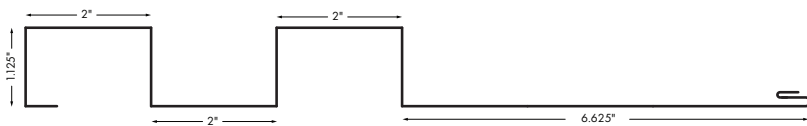
Profile 3



Profile 4



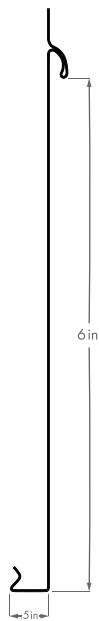
Profile 5



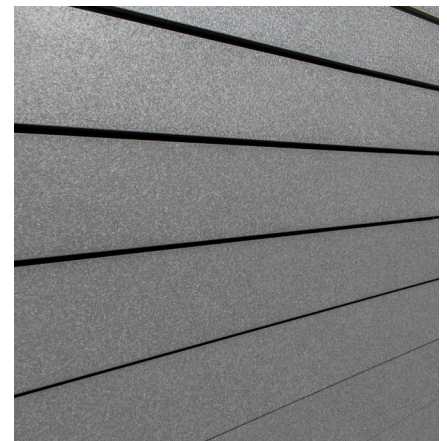
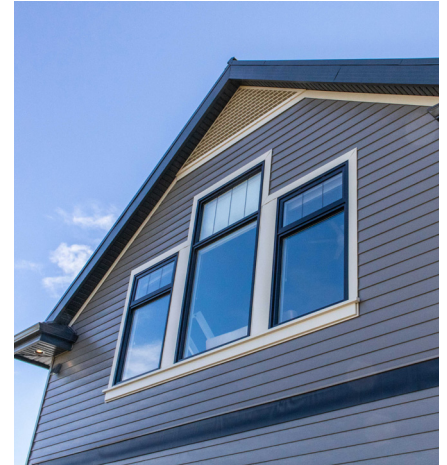
SCAN CODE TO
VIEW ARMOUR
WALL TRIMS &
ACCESSORIES!

OR VISIT US AT
Armourside.com

Bevel

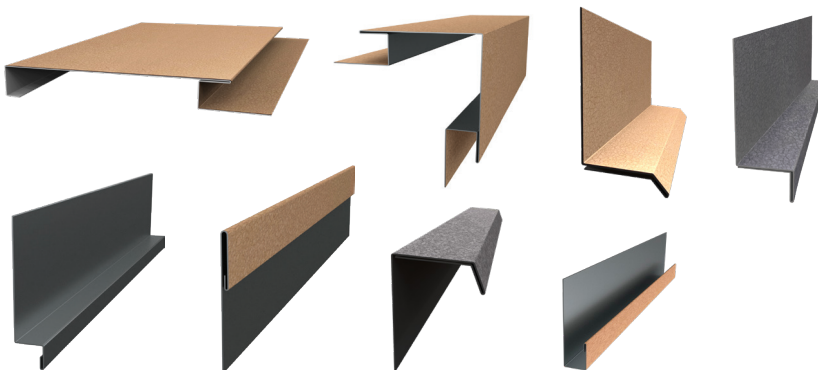


Bevel Lap 190024 - 12' 6" Lengths | 6" Coverage = 12 pieces per box / 75 sqft



Our bevel lap siding profiles build on the tradition of lap siding while providing a beautiful textured finish in the colours of today.

Bevel Trims



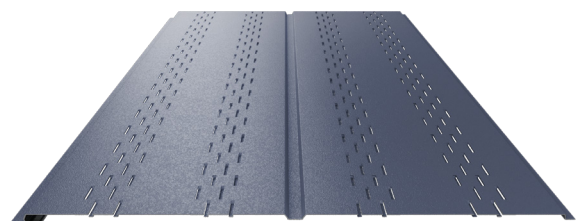
SCAN CODE TO VIEW
THE BEVEL TRIMS &
ACCESSORIES!

OR VISIT US AT
Armourside.com

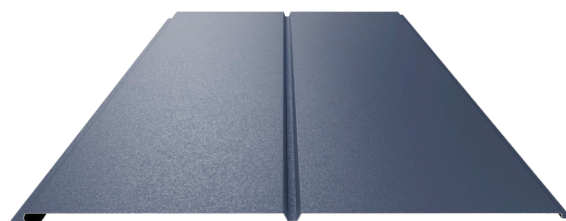
D7 Soffit & Fascia



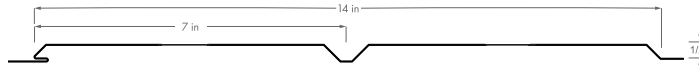
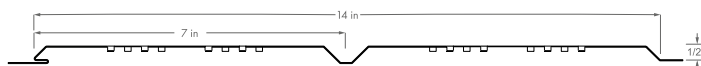
The Double 7 two-panel soffit is an extremely versatile and cost-effective soffit product. Designed to accommodate maximum coverage & cost savings, the Double 7 profile provides a refined architectural aesthetic and an efficient cladding solution.



Two Panel Vented Soffit
12' Length - 190080



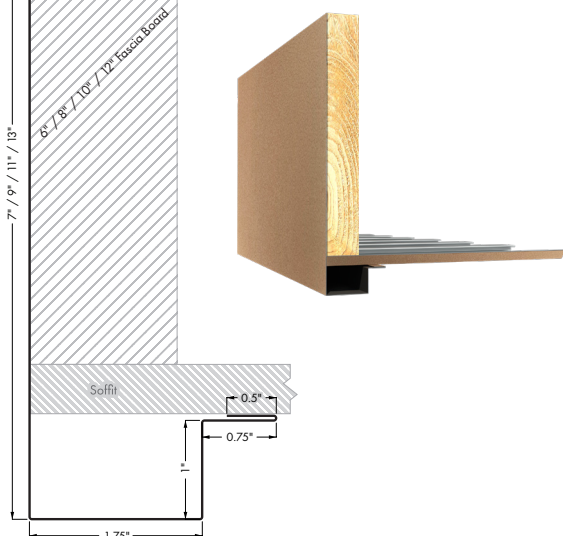
Two Panel Non-Vented (Smooth) Soffit
12' Length - 190085



Drop Down Fascia

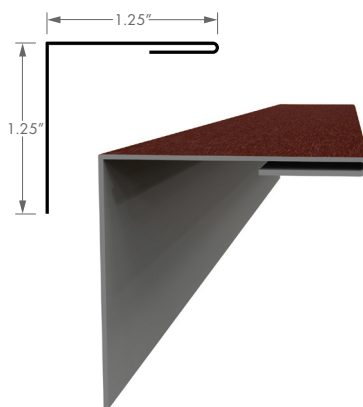
10' Standard Length - Custom Widths Available

- 6" x 10' - 190087
- 8" x 10' - 190088
- 10" x 10' - 190089
- 12" x 10' - 190090



L Trim 10'

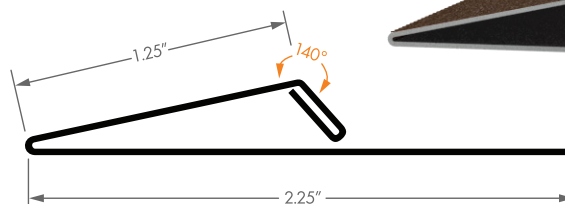
190030



Uses 190037

Fascia/Gable Trim 10'

190032





OXFORD WHITE	SIERRA BROWN
BRIDGETOWN BEIGE	VICTORIAN ONYX
SAHARA TAN	SMOKEY CAYENNE
GREY MIST	DESERT TAUPE
BLUE PEARL	NAVY BLUE
TWILIGHT GREY	HONEY BLONDE
ANTIQUE ROSEWOOD	SEAFOAM MIST
TUSCAN COFFEE	SPANISH MOSS

Benefits

ARMOUR SIDE PRODUCTS OFFER NUMEROUS BENEFITS AND ADVANTAGES OVER THE COMPETITION, SUCH AS:

Maintenance

Simply rinse with a garden hose twice a year.

Durability

Armour Side products are created out of triple coated SMP (Silicone Modified Polyester) paint on 28 Gauge Galvalume Steel, meaning you have a high grade of corrosion-resistant coating on an extremely robust steel. It includes a 40 Year Pro-Rated Finish Warranty.

Fire Resistance

Armour Side is made from steel, so it is non-combustible and has a Class A Fire Rating. That means no melting, cracking, or steel substrate damage, even from your BBQ!

Impervious to Mold, Moisture & Insects

Steel also means it is impervious to insects & plant growth, such as moss.

Sustainable

Fiber cement, vinyl and PVC cladding are simply not environmentally friendly materials. These materials are not recyclable and will generally end their life cycle in a landfill. The Recycled Content of our steel is 5% Pre-Consumer and 15-20% Post-Consumer with the documentation information required for LEED submittals.

Product Testing

- NON-Combustibility Test (CAN/ULC S114-18)
- Surface NON-Combustibility Test (CAN/ULC S102-18)
- 750°C Tube Furnace Test (ASTM E136-16A)
- Fire Test (ULC-S135-04)
- Deformation Resistance Test (CAN/CGSB-93.4-92)
- Wind Test (ASTM E330/E330M-14)
- NRC-CNRC, Canadian Construction Materials Centre building product evaluation. Certification number: CCMC 14153-L



Armour Side conforms to CAN/CGSB-93.4-92, "Galvanized Steel & Aluminum-Zinc Alloy Coated Steel Siding, Soffits & Fascia, Prefinished, Residential"



SCAN CODE TO
VIEW OUR FULL
PRODUCT LINE-UP!

OR VISIT US AT
Armourside.com